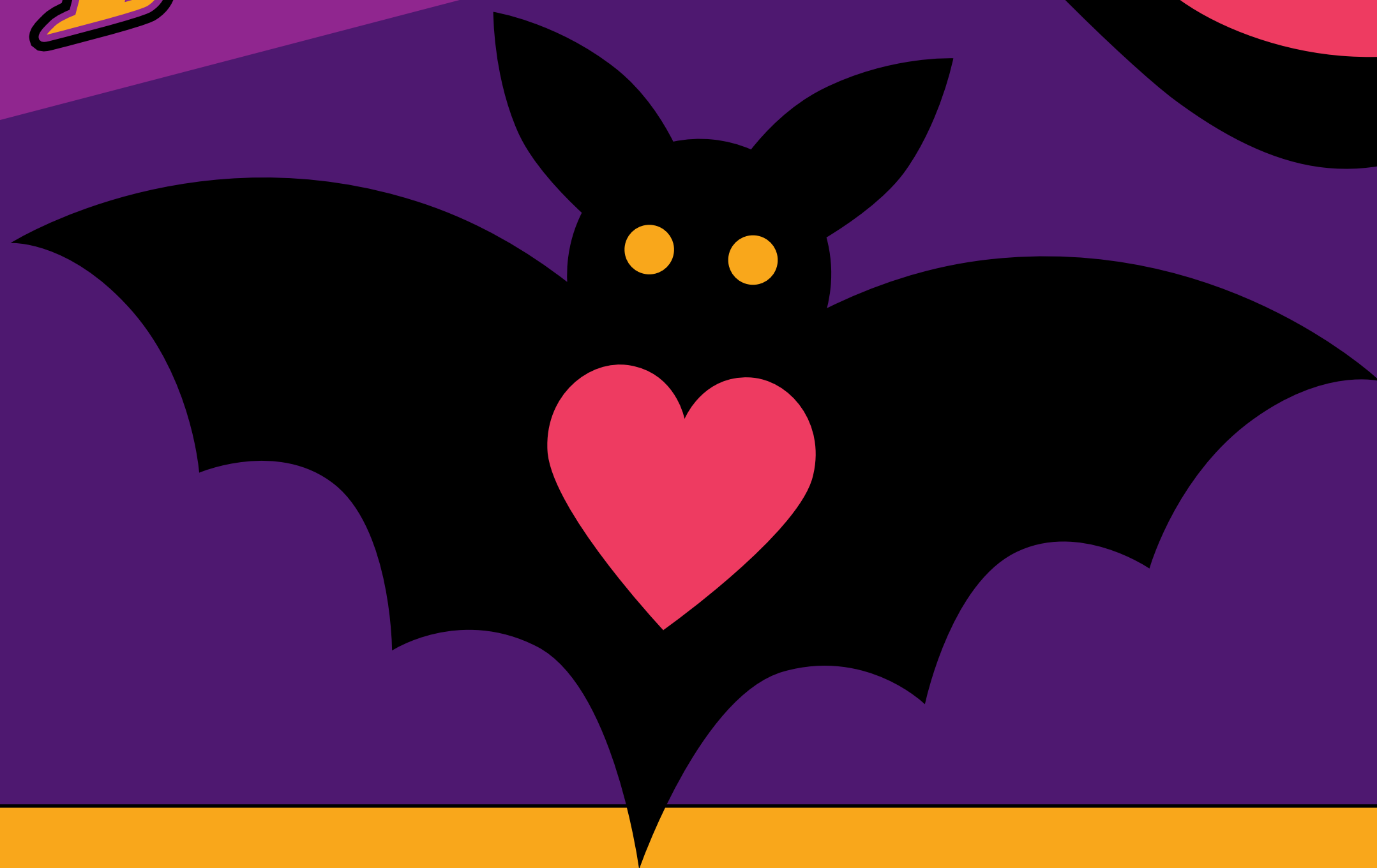


Halloween Pins



1

Materials

If you don't like to sew, you can use craft glue or a glue gun instead!

Felt Sheets

(1 each of 4 colors, plus one stiffer white sheet)

White

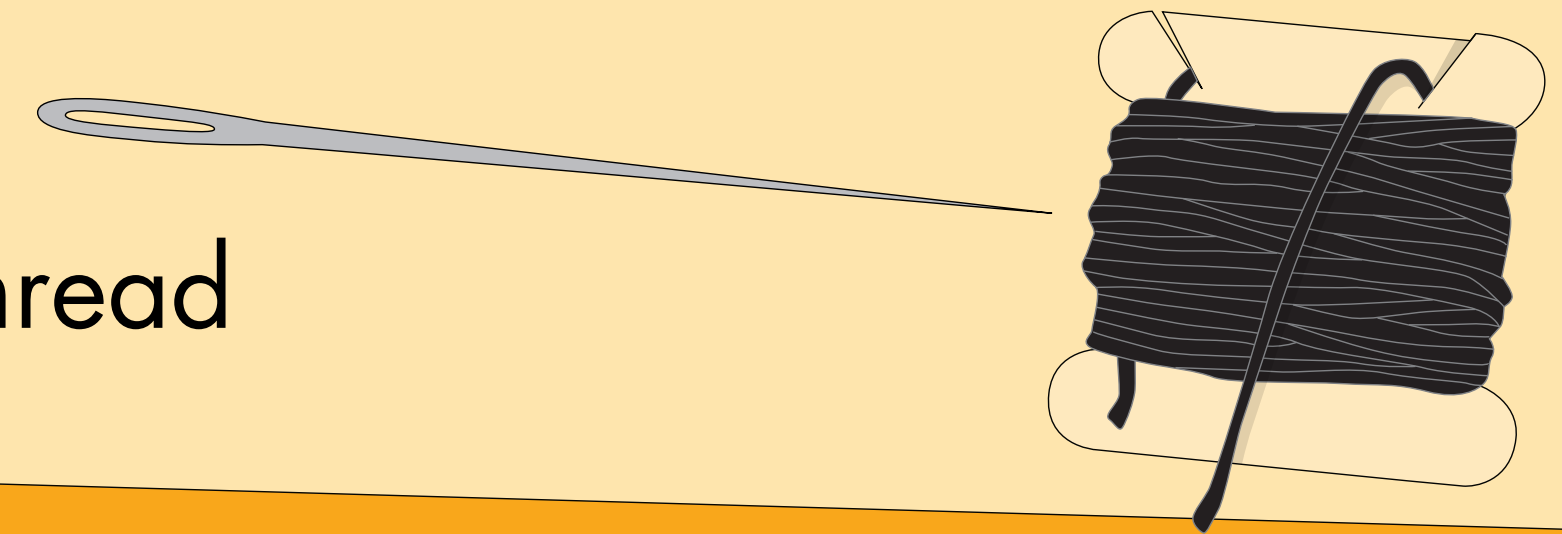
Black

Yellow

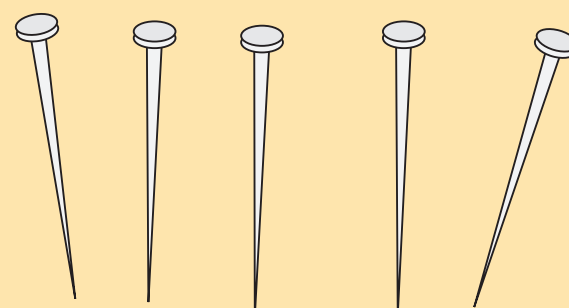
Pink



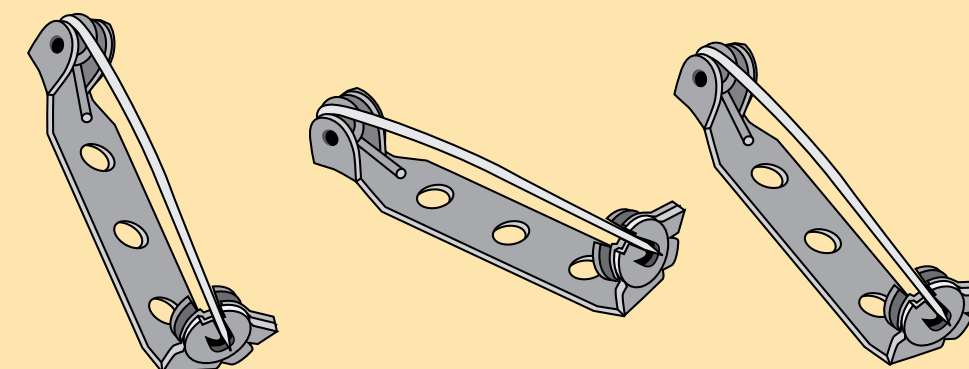
Needle & Embroidery Thread



Straight Pins



3 Pin Backs



2

Patterns

Download the pattern sheets at:
<https://bit.ly/46HVDQj>

Halloween
Pins



PATTERNS



Cat Pin 

White

Bat Pin 

Pink

Black

Yellow

White

Skull Pin 

Yellow

Black

Black

Black

White

Pink

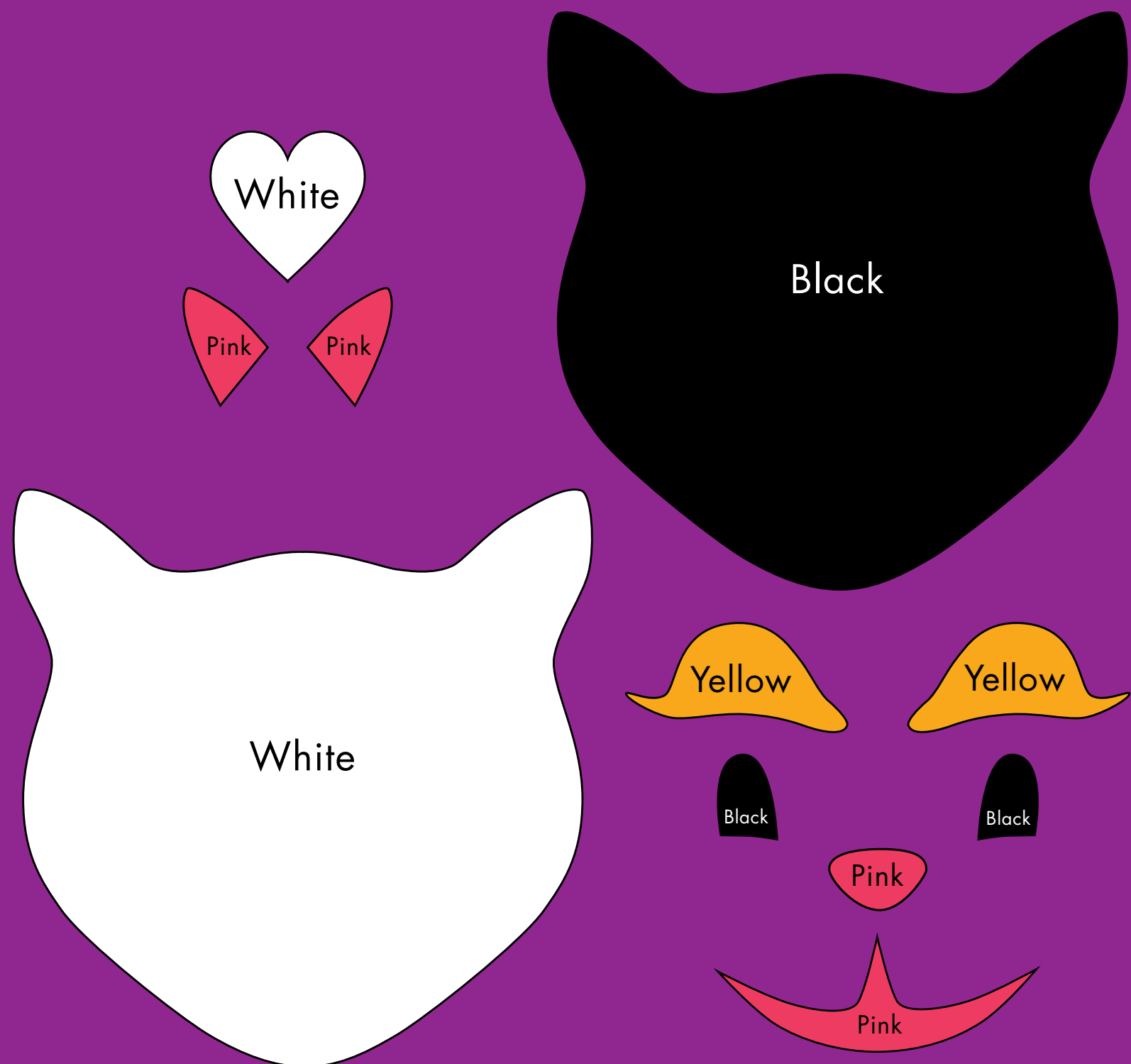
White

3

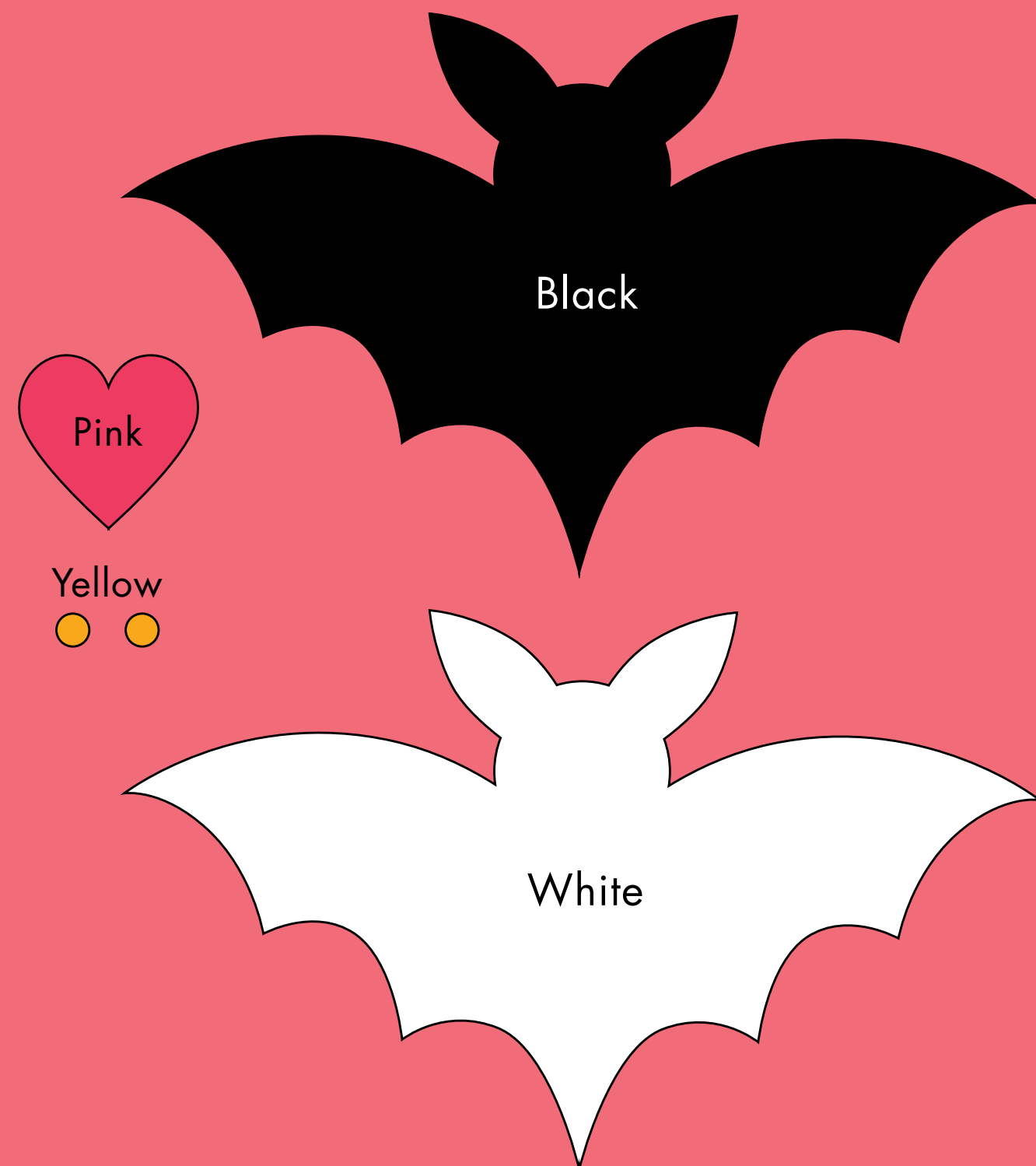
Cut out the Pieces

Use the pattern sheets to cut out the felt pieces. It will be helpful to pin the patterns to the felt with straight pins, then cut around the outlines.

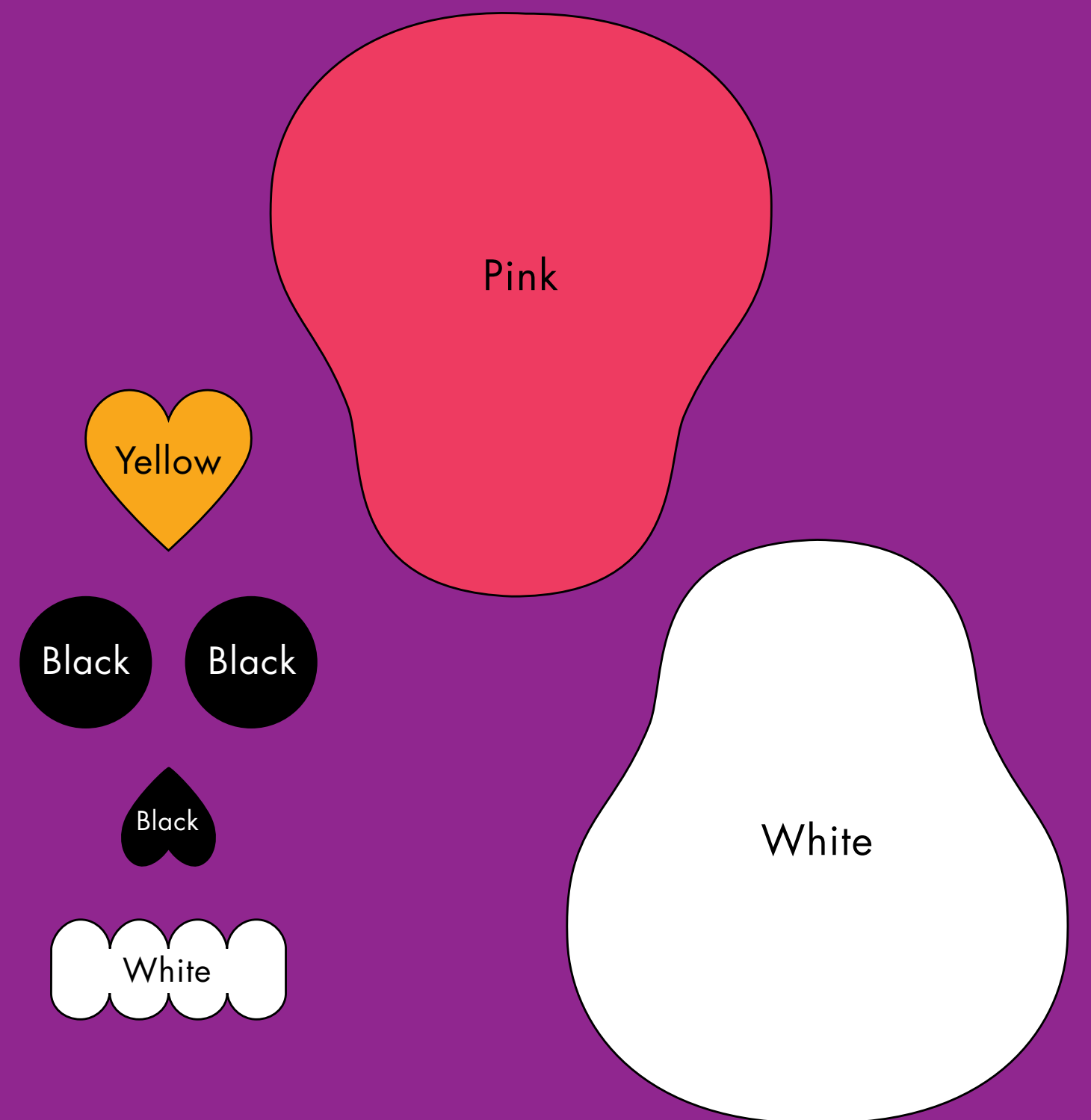
Cat Pin



Bat Pin



Skull Pin

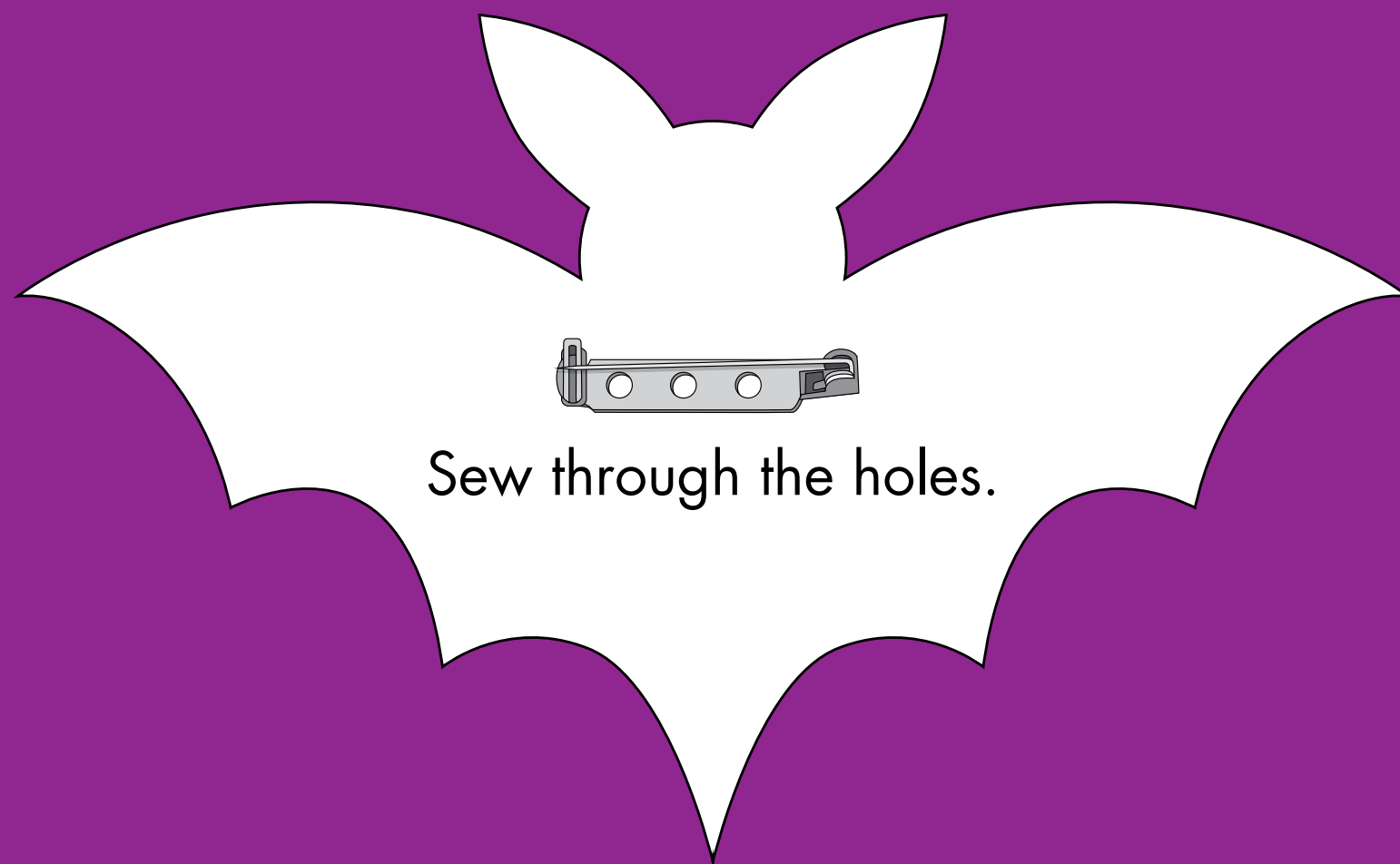


4

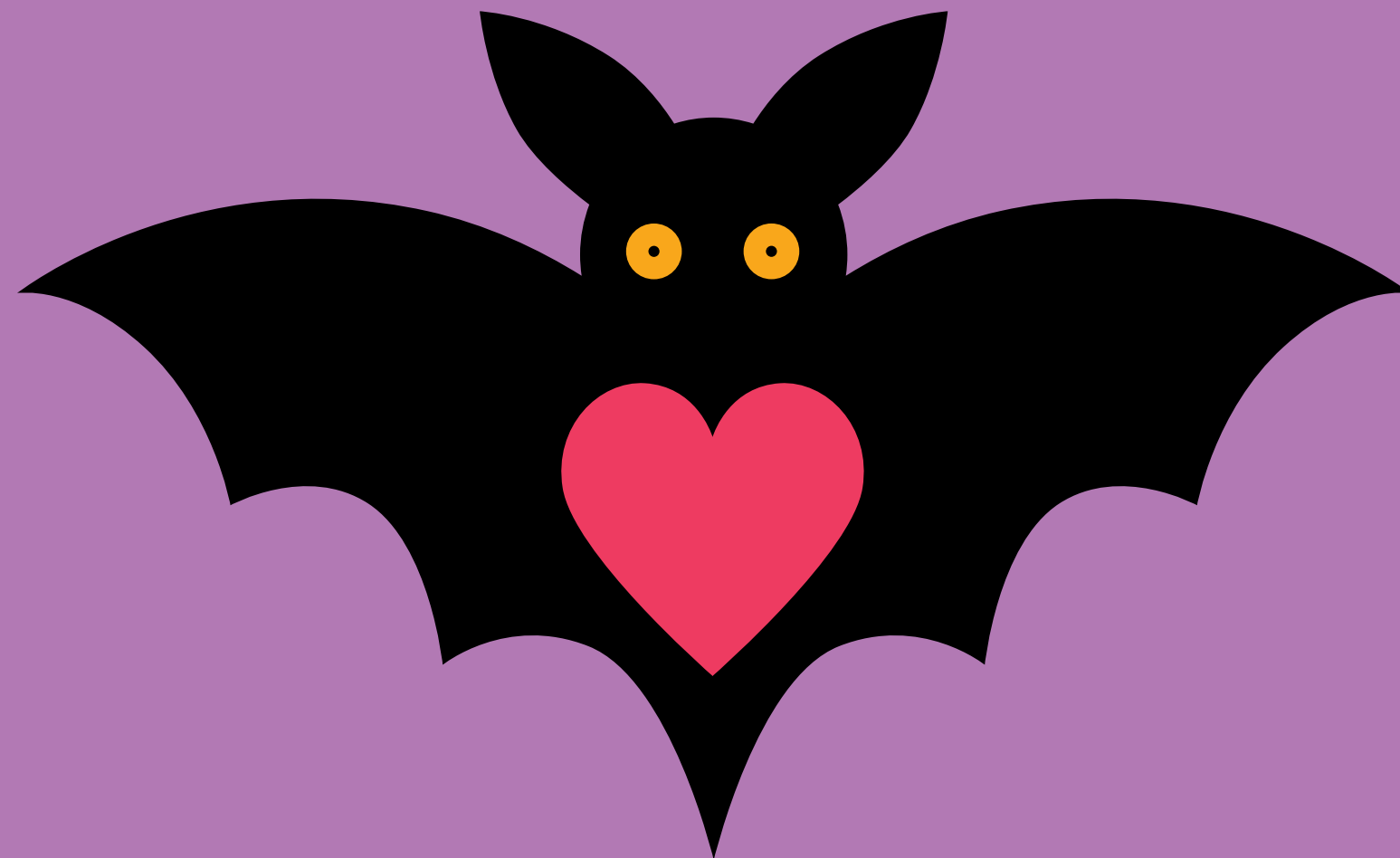
Sew the Bat Pin

Use straight pins to secure the larger pieces in place before sewing. You can use black thread for all of the sewing. If you don't like to sew, you can use a glue gun or craft glue to attach the pieces.

- 1.** Sew the pin back to the stiff white felt backing.



- 2.** Sew the yellow eyes and pink heart to the black bat body as shown.

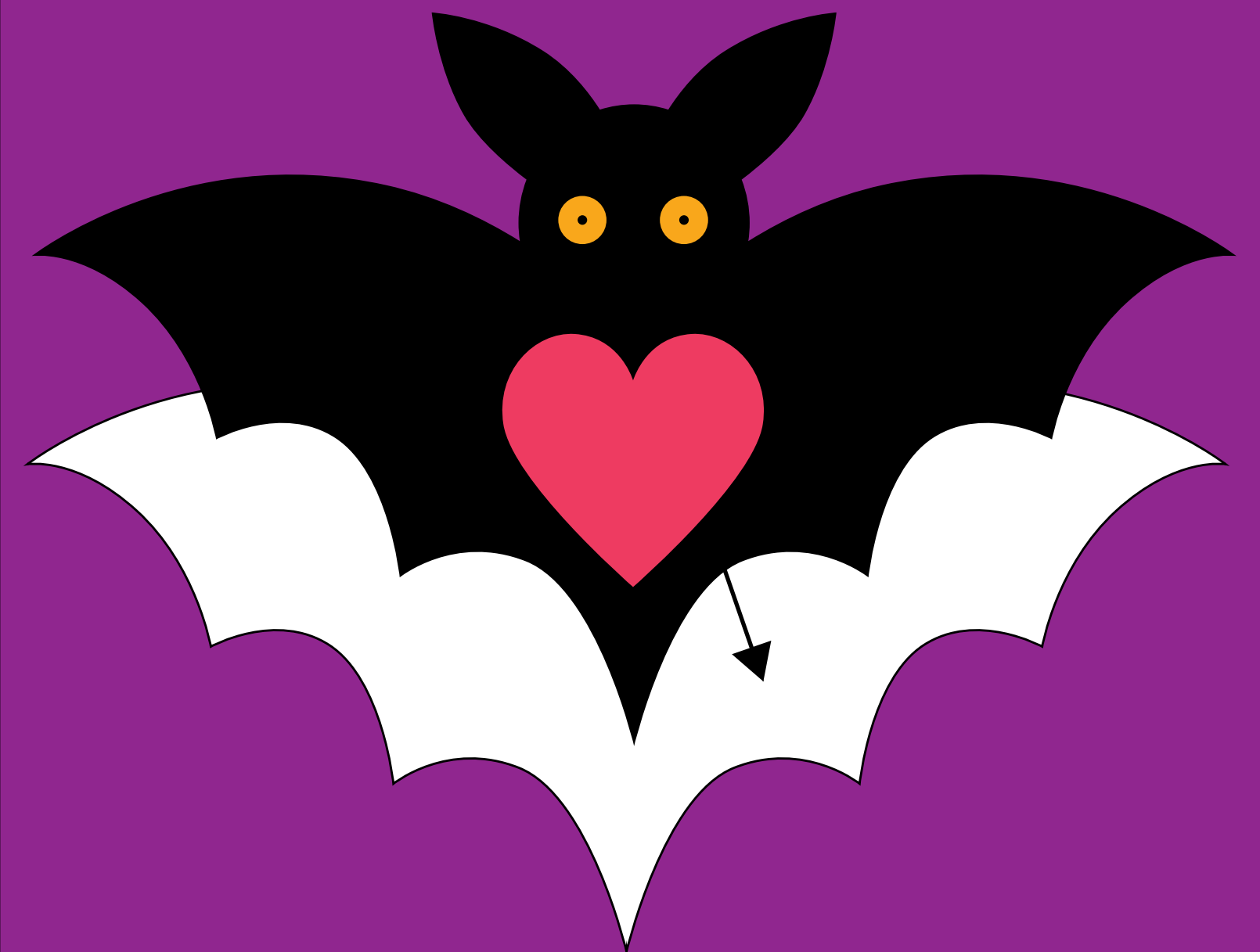


For the eyes, instead of sewing around the edges, you can make a single stitch in the center of each eye to tack it down.

Make a single black stitch in the center. It will look like a tiny pupil.



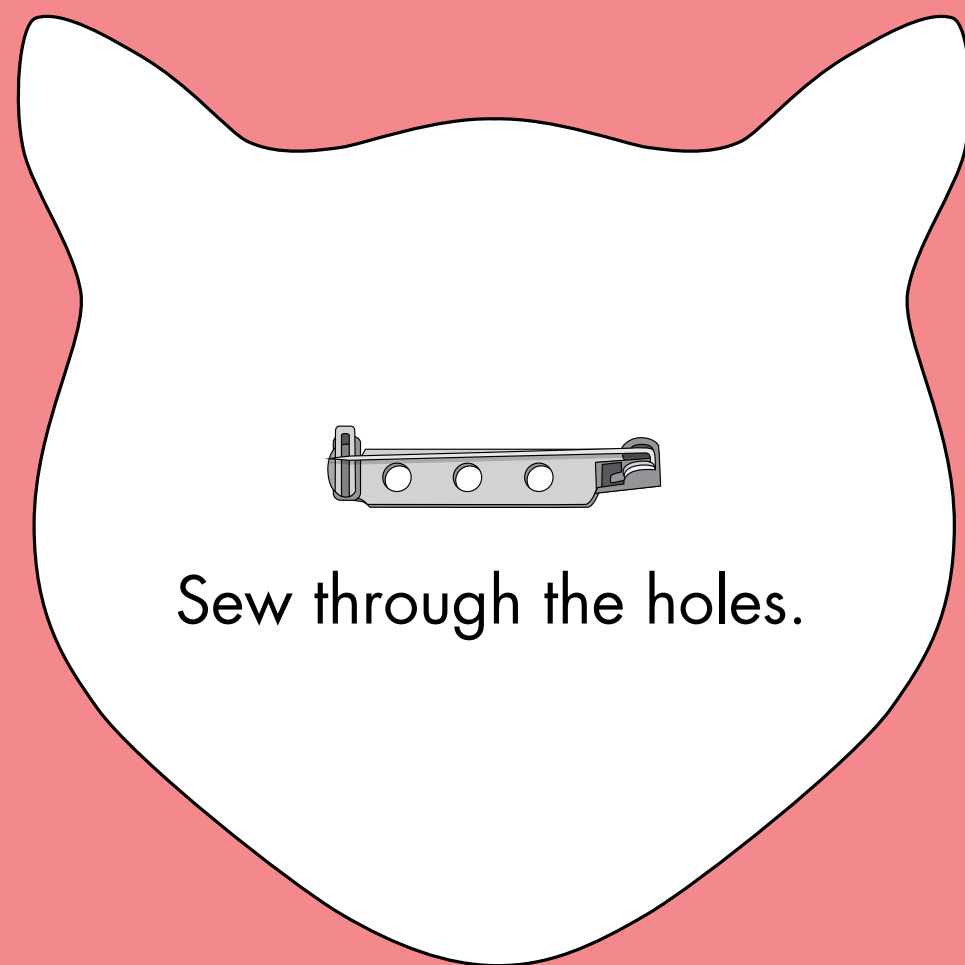
- 3.** Align the black bat body to the front of the white backing and sew around the edge with black thread.



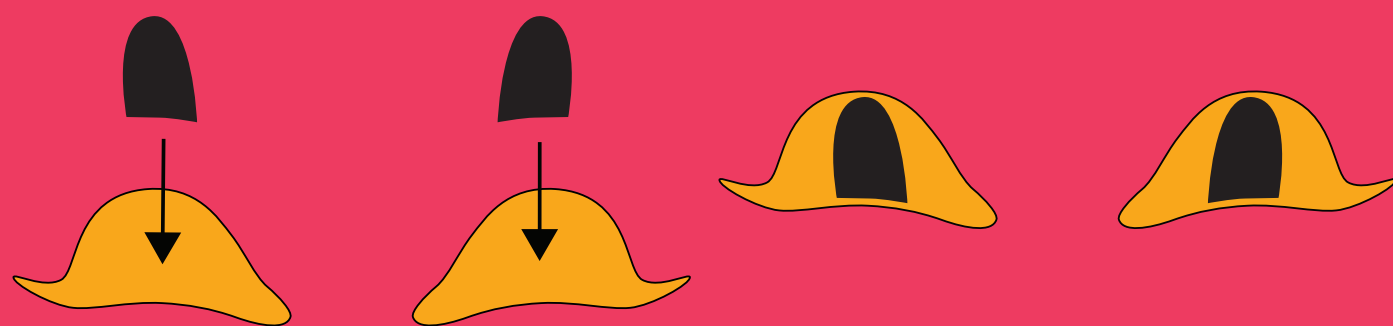
5

Sew the Cat Pin

1. Sew the pin back to the stiff white felt backing.



2. Using black thread, sew the black pupils onto the yellow eyes as shown.

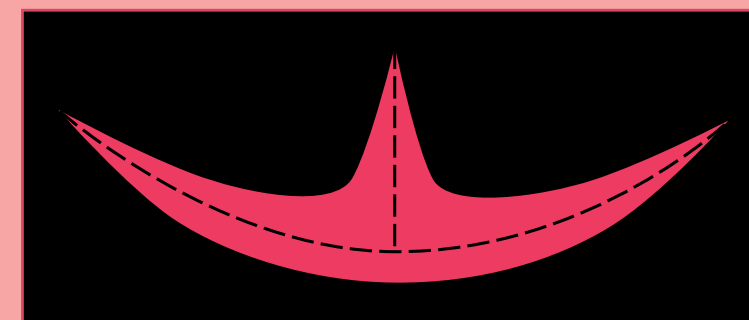


3. Sew the eyes, ears, nose, mouth, and heart to the black cat face as shown.



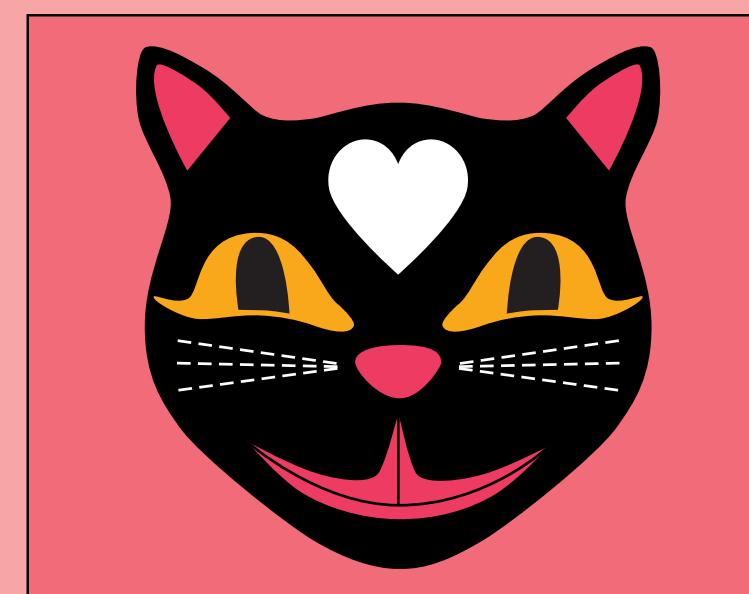
Instead of sewing around the edges of the pink mouth, it may be easier to sew a single line along the middle to tack it down.

Sew a line along the middle of the smile and another line up to the nose using small, close stitches.



OPTIONAL: If you want to make whiskers, you can use white thread (or yellow or pink) and sew three lines that radiate out from the nose on each side.

Sew 3 lines on each side of the nose as shown.



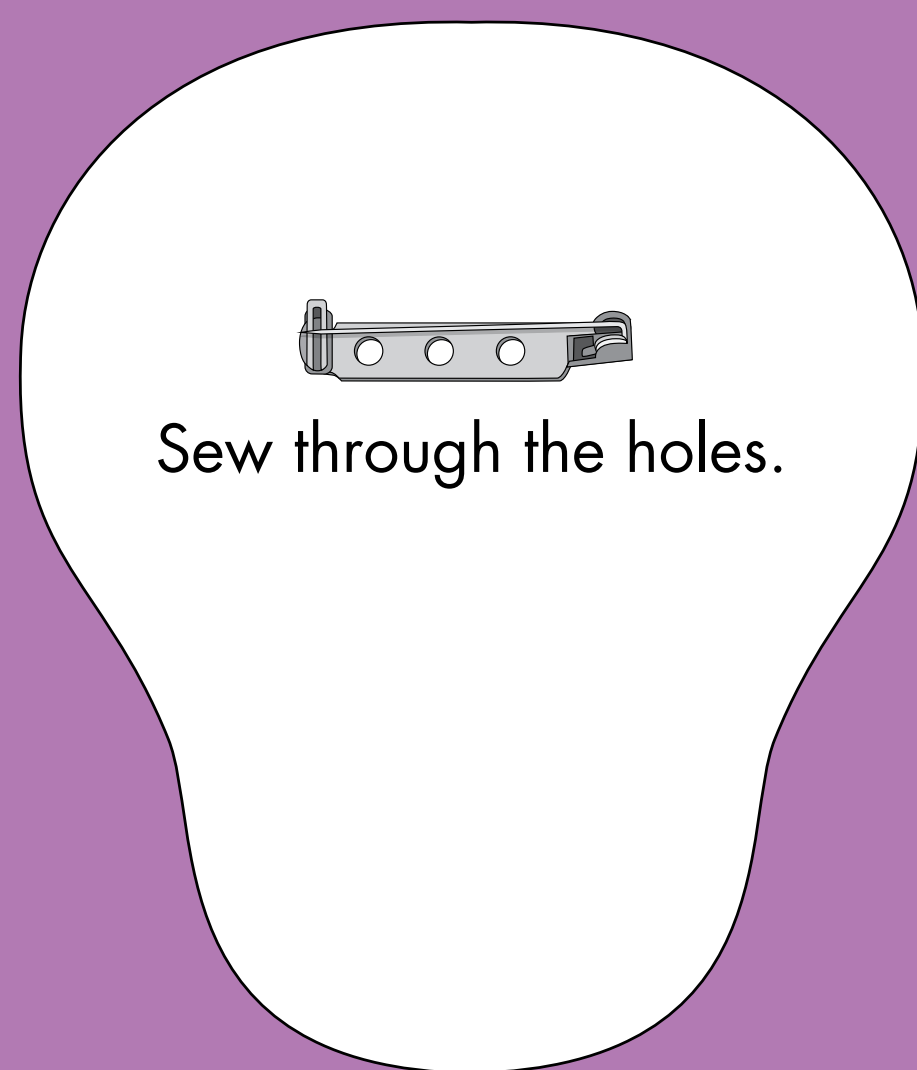
4. Align the black cat face to the front of the white backing and sew around the edge with black thread.



6

Sew the Skull Pin

1. Sew the pin back to the stiff white felt backing.

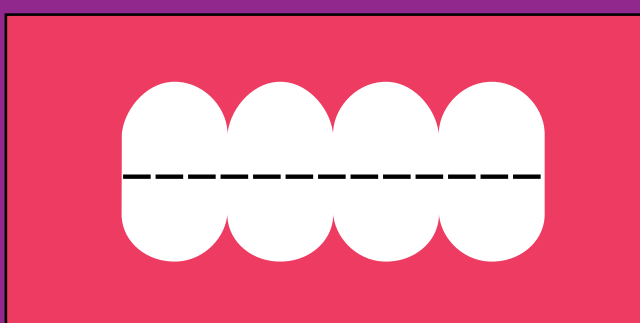


2. Sew the eyes, nose, mouth, and heart to the pink skull face as shown.

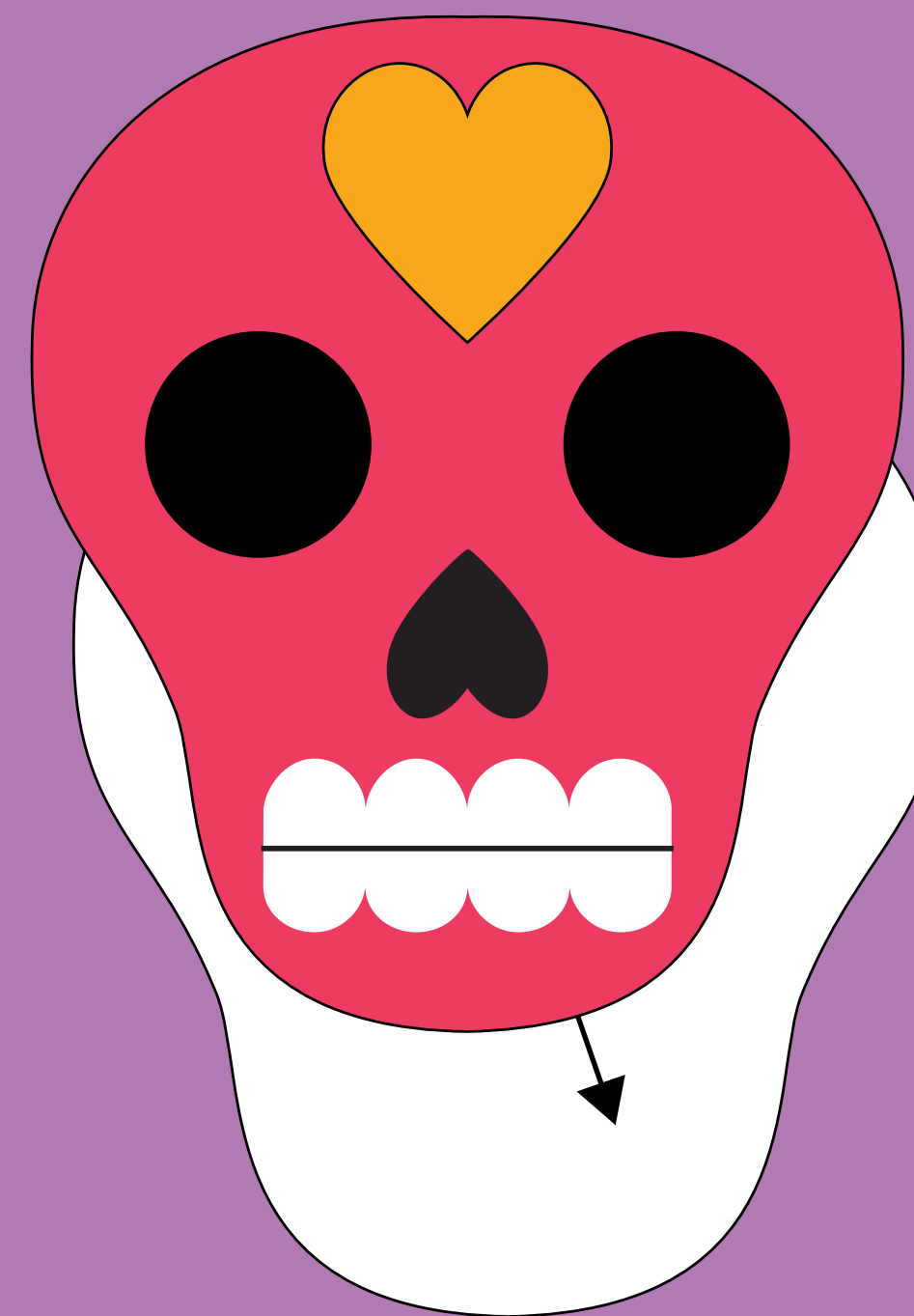


Instead of sewing around the edges of the teeth, use black thread and sew a straight line across the center of the white felt with tight, overlapping stitches.

Sew a single black line across the center of the teeth to tack them down.



3. Align the pink skull face to the front of the white backing and sew around the edge with pink thread.





*And You're
Done!!!*