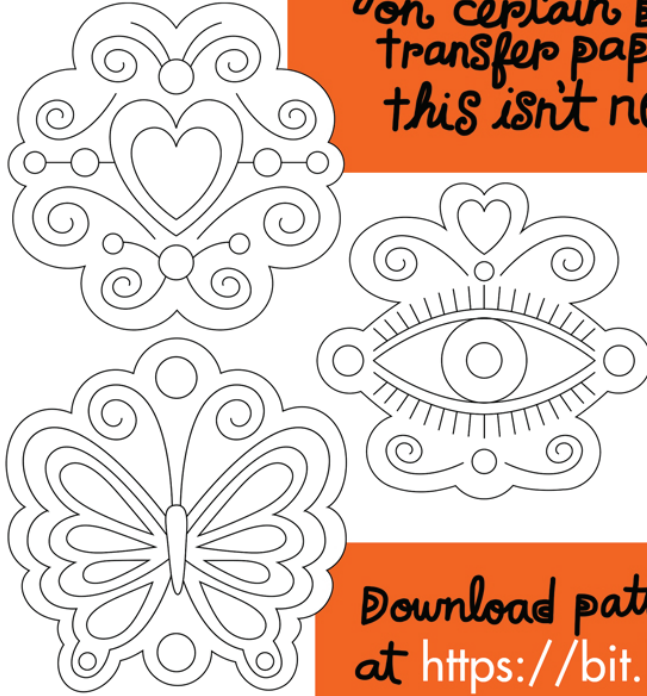




Step 1:

Print out pattern sheet.
(you can print directly on certain brands of transfer paper, but this isn't necessary.)



Download pattern sheet at <https://bit.ly/2LUzExp>

Step 2

Place transfer paper (with printed pattern) on top of felt and pin down to hold in place. Trace over pattern lines with pencil. (Lift edges to check if pattern is transferring. You may need to re-trace a little.)



Step 3

Start Sewing!

You will need to use 2 kinds of stitches:

Back Stitch

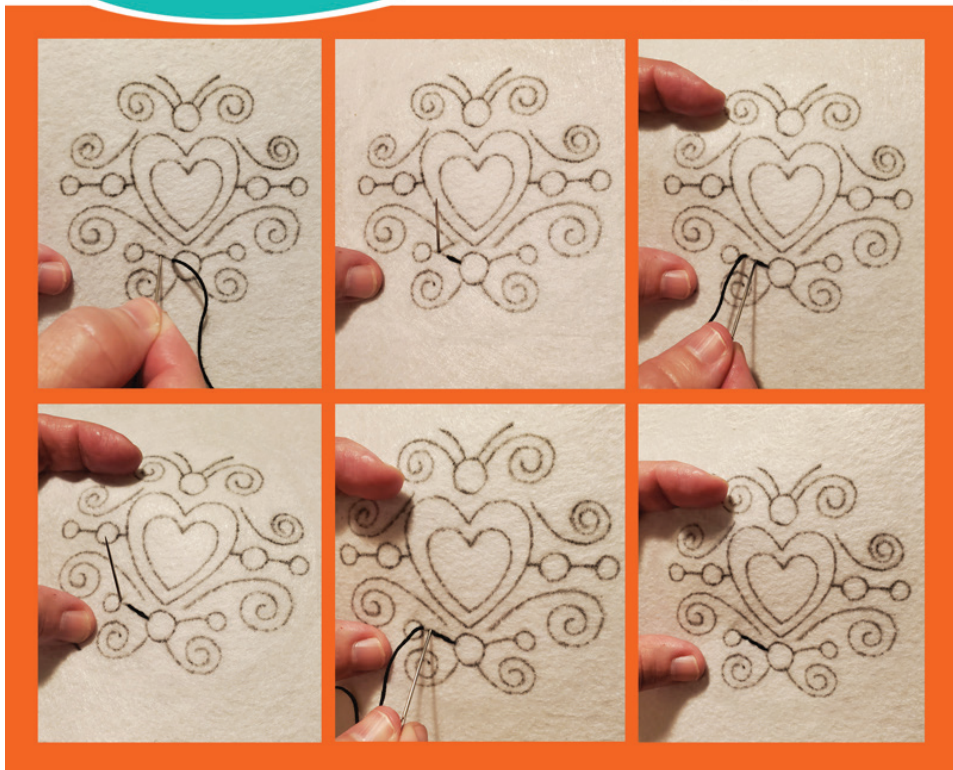
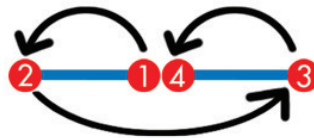
is like drawing a line.

Satin Stitch

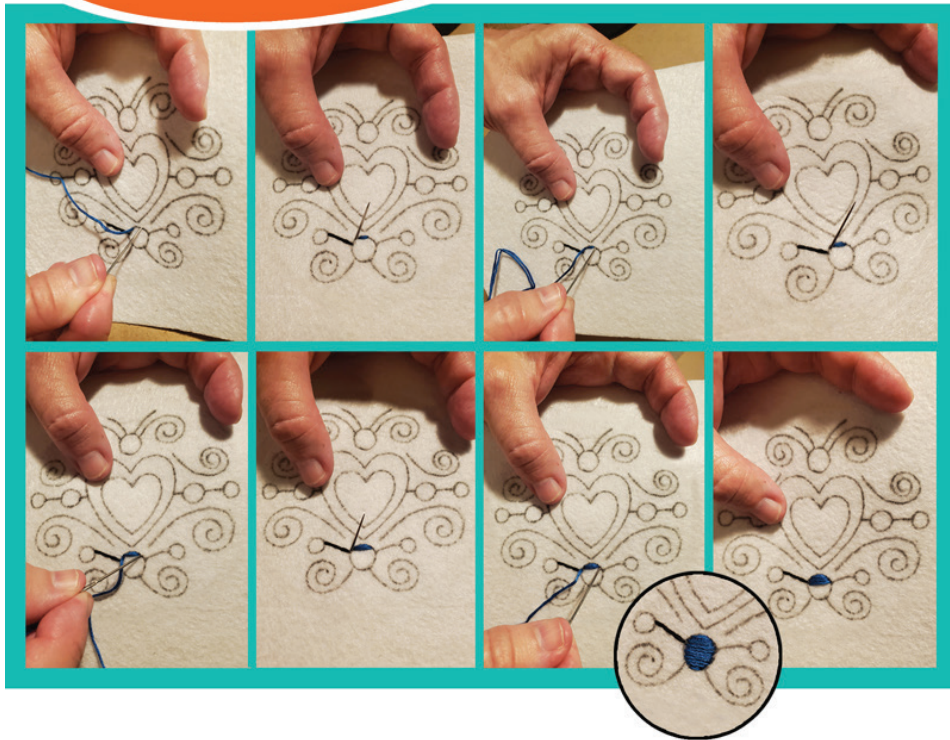
is like coloring in.



Back Stitch



Satin Stitch



Step 4

Finished Pieces!



