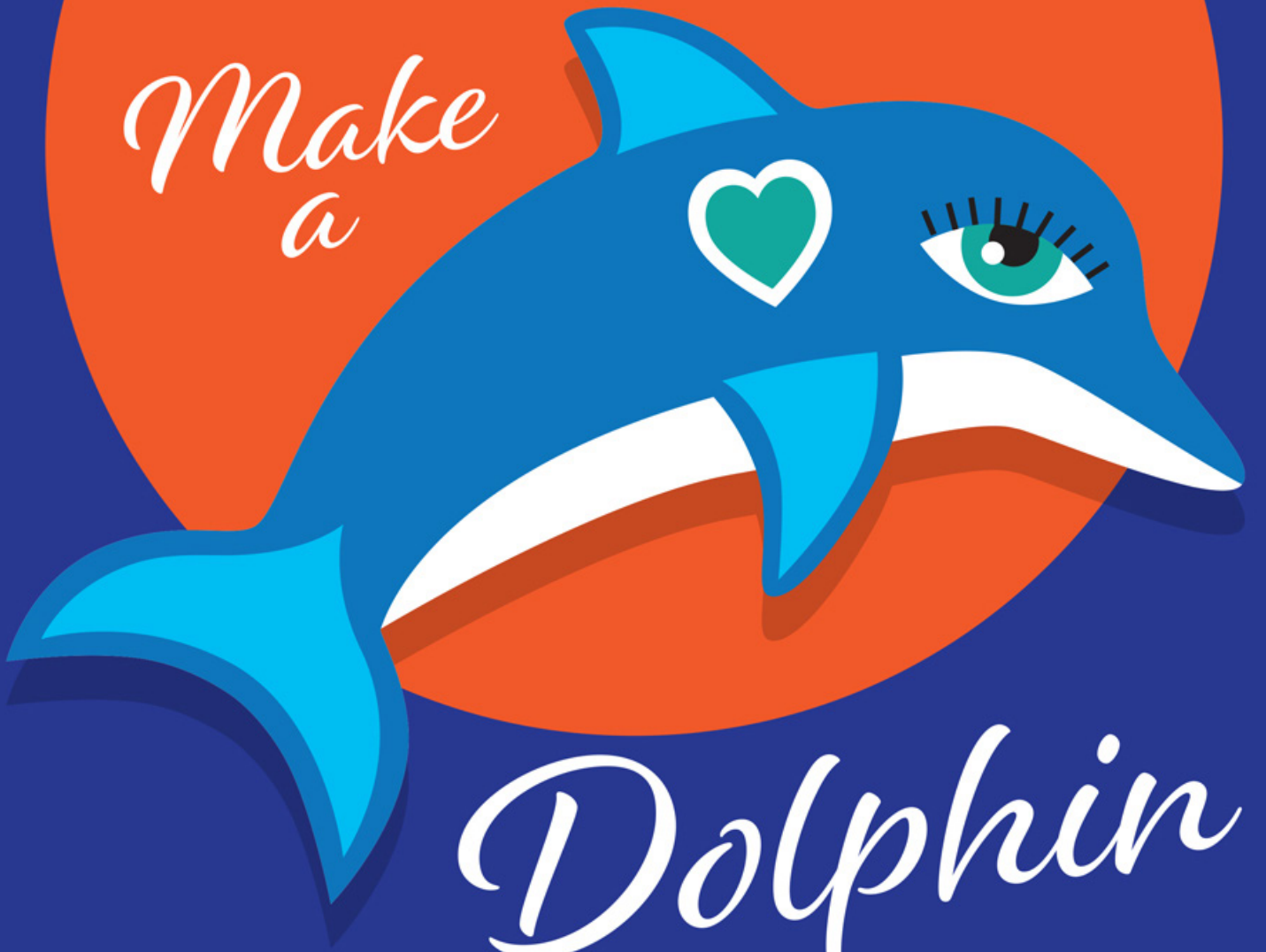
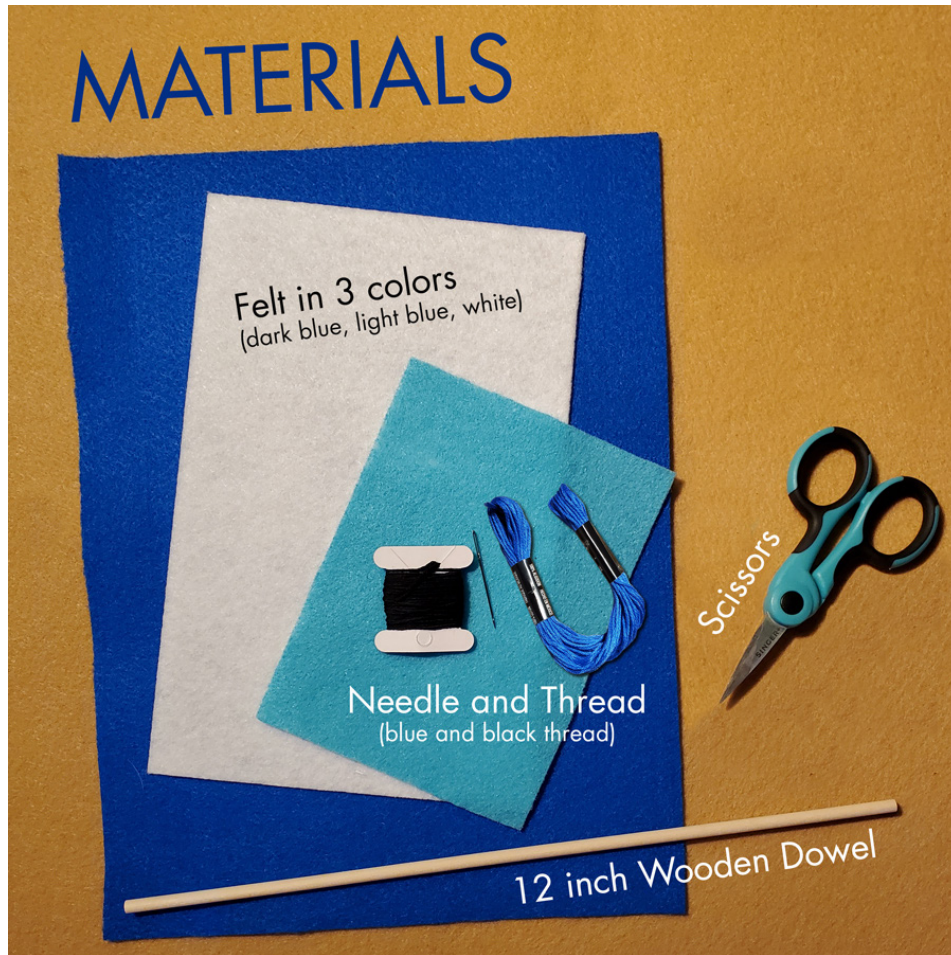


*Make
a*

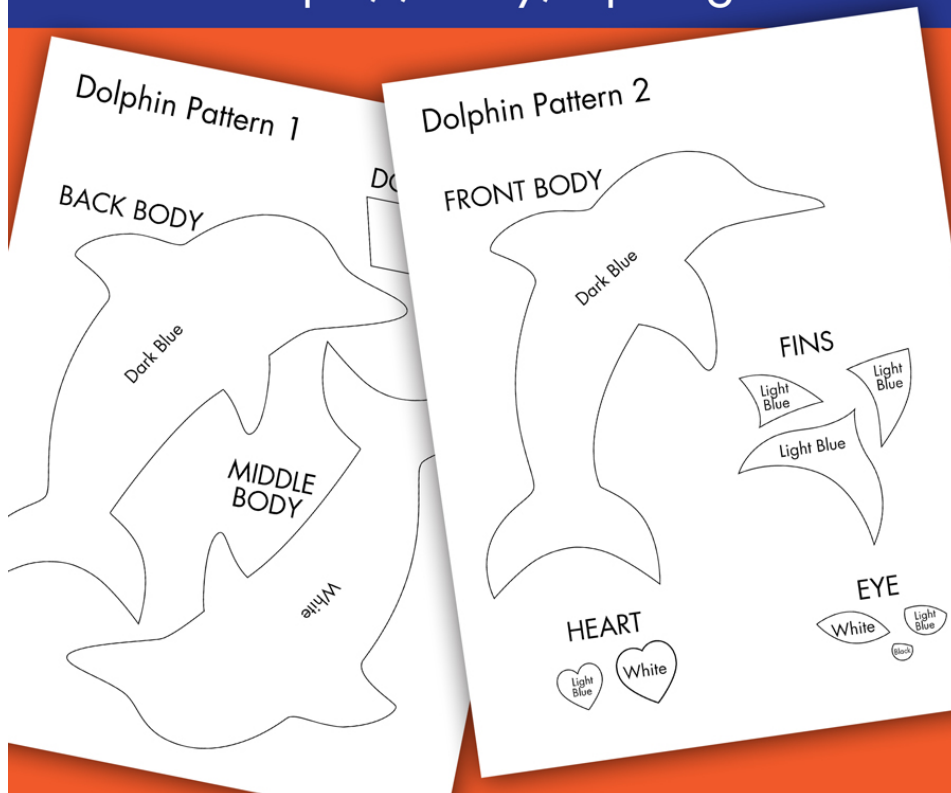


Dolphin

MATERIALS



Download the pattern
at <https://bit.ly/3p7CgeJ>



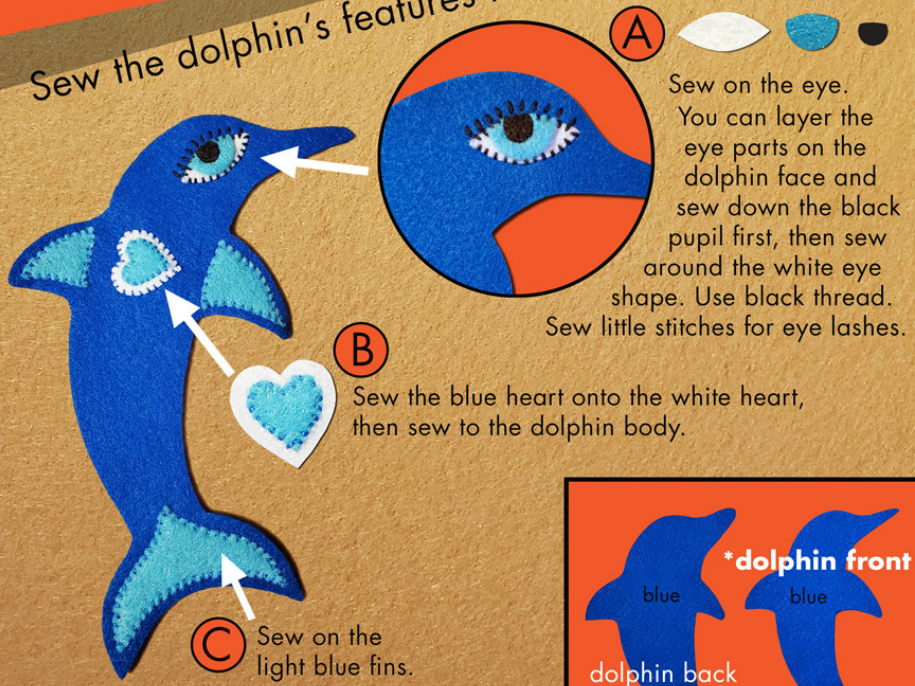
Step One

Use the pattern sheets to cut out the dolphin parts.



Step Two

Sew the dolphin's features to the **dolphin front***.

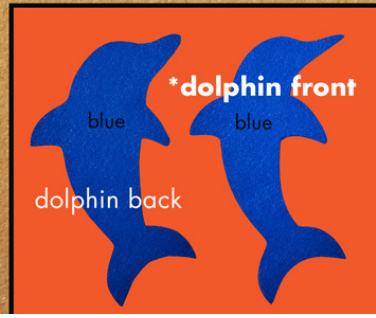


A

Sew on the eye.
You can layer the eye parts on the dolphin face and sew down the black pupil first, then sew around the white eye shape. Use black thread.
Sew little stitches for eye lashes.

B Sew the blue heart onto the white heart, then sew to the dolphin body.

C Sew on the light blue fins.



Step Three

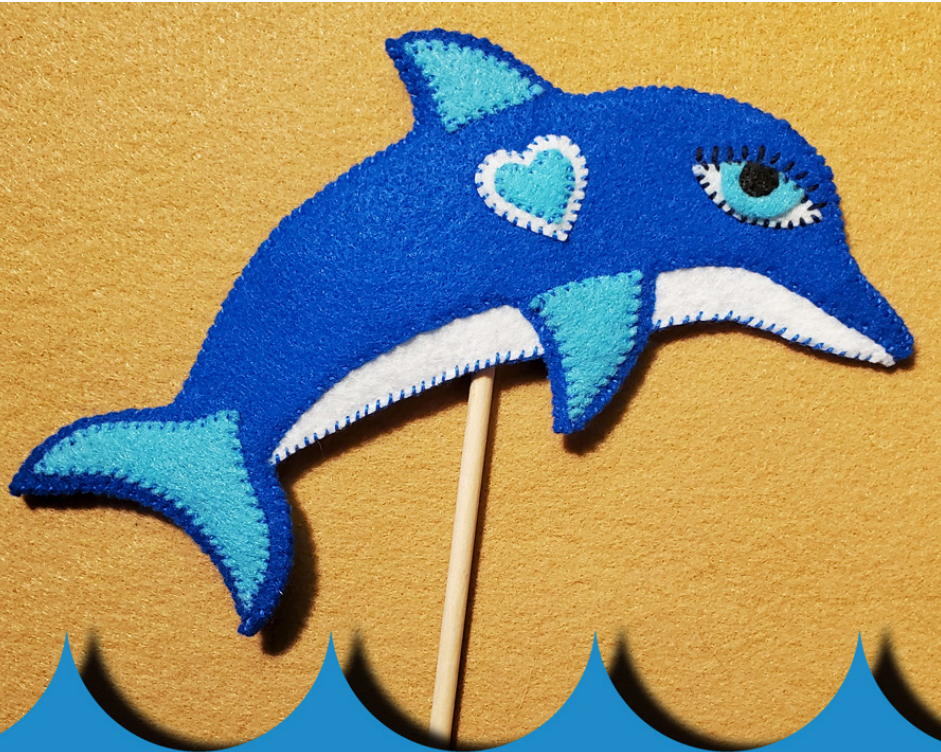
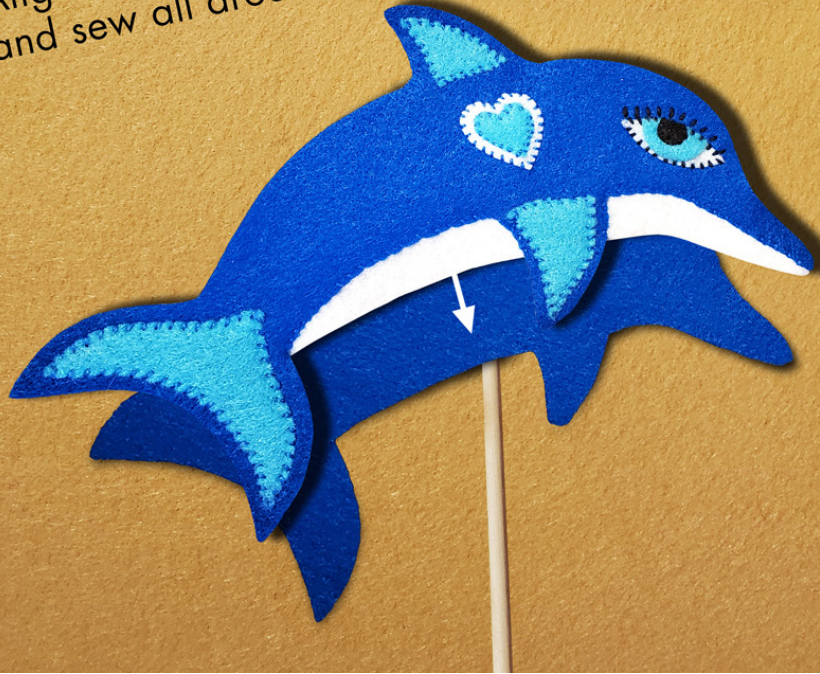


Step Four



Step Five

Align the dolphin front on top of the dolphin back and sew all around the edge.



You've made a dolphin!